

MAZDA

EQUIPMENT FOR YOUR MAZDA



TJM
4X4 EQUIPPED



ABOUT US

Back in the 70's when 4WD's were few and far between, three adventure seeking mates got their 'off road thrill' with customised FJ40s, F100s & Rovers. Each fitted with custom made bull bars, roll bars and sand tyres – they drew the attention of friends and bystanders. Before long, Lloyd Taylor, Cliff Jones and Steve Mollenhauer were making hand-made custom bars for a growing number of fans. As the demand continued to grow, they decided it was time to get serious.

In 1973, with little more than their combined initials, shared passion and appreciation for quality products - TJM was founded and the rest is history. They were pioneers and TJM became the first company in Australia to manufacture and distribute quality 4WD equipment.

Our product range has extensively grown to include; steel and alloy bull bars, nudge bars, side and rear protection bars, side steps, trade racks, roof racks, TJM recovery equipment, TJM winches, TJM XGS suspension, Airtec snorkels, TJM Pro Lockers and TJM roof top tents & awnings.

While TJM has grown to be a sophisticated operation, we have never forgotten the key elements that resulted in the formation of the brand.

Trust; from the quality of manufacturing.

Pride; in our innovative designs.

Adventure; heading out from suburbia and experiencing the wonders of our unique and breathtaking country, Australia.







TJM Outback bars employ a multiple fold channel/wing design. Folds are deliberately spaced across the channel for maximum strength and stylish looks. The upswept tapered wing provides excellent approach angle for accessibility.



Recessed L.E.D. fog lights come standard along with recessed polycarbonate indicators & park lights.



TJMs bull bar uprights feature a single piece of steel which extends from the upright down through the bumper channel to the chassis mount, maximising strength. 40mm Cato straps soften the edges and add to the aesthetics.



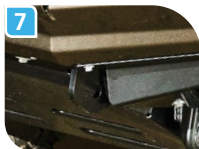
TJM bull bars provide secure, strong and stable mounting points to fit a large array of driving lights. The strength of the TJM product guards against excessive movement resulting in a vibrating beam pattern, bulb failure or light body fatigue.



TJMs channel design allows maximum airflow to the vehicle's radiator. These vents as well as the viewing hole on the top of the channel also allows easy access to the vehicle's winch controls.



Vehicle mounted aerials are often essential when travelling in remote locations. TJM bull bars feature two heavy duty aerial tabs located behind the bars top cross tube.



TJMs mounting system is specifically engineered for each vehicle. The design spreads impact and winching loads evenly across the vehicle's chassis. The design ensures the bull bar is strong enough for extreme conditions and functions properly in impact events.



Integrated recovery points rated to 8000KG in a straight line pull when used with a 8000KG equaliser strap and 2 x 4.75T bow shackles. (Certain TJM bull bar models may not incorporate this feature).



The patented engineered winch frame mount accommodates a variety of winches and does not interfere with the vehicle's air bag triggering system. The bar is designed and tested to endure the heavy stresses of winching.



T-slot recovery jack points allow a TJM recovery jack to be mounted directly onto the bull bar. (Certain TJM bull bar models may not incorporate the T-slot feature).



Many TJM bull bars come standard with integrated lower wing & centre guards. Additional Front, Sump & Transmission guards are also available separately depending on vehicle.



The new Outback bar for Mazda BT-50s 2011+ features 63mm diameter tubing.

Certain TJM bull bar models may not incorporate all features. New model Outback bull bar now features 63mm diameter tubing.





Outback steel bull bar
070SB13L46E - SUITS PETROL & DIESEL MODELS



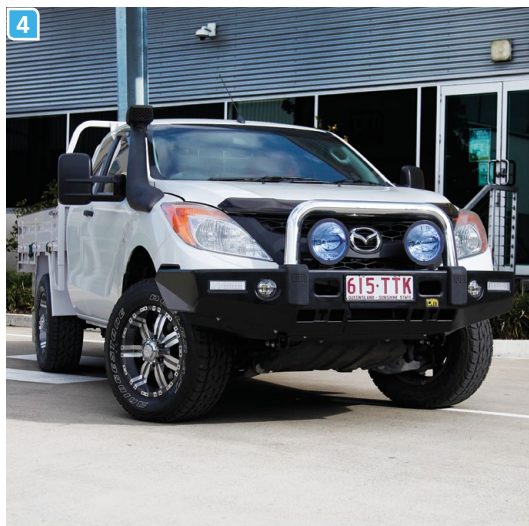
1



2



3



4



5



6

1-3 | Signature alloy bull bar
070AP15N46E SUITS PETROL & DIESEL MODELS

4 | Explorer steel bull bar
070SB03N46E SUITS PETROL & DIESEL MODELS

5 | Frontier steel bull bar
070SB17N46E SUITS PETROL & DIESEL MODELS

6 | Tradesman steel fleet bull bar
070SB15F46E SUITS PETROL & DIESEL MODELS



RB6 rear bar

0815B27321T - SUITS PETROL & DIESEL MODELS

1 & 2 | RB6 rear bar

081SB27321T SUITS PETROL & DIESEL MODELS

3 & 4 | Modular side bars & steps

735SBSSL21T & 780SBKTL46E

(SIDE BARS & SIDE STEPS SHOWN, SIDE STEPS ALSO AVAILABLE WITHOUT SIDEBARS)

SUITS PETROL & DIESEL MODELS

5 & 6 | Underbody guards

077SBFUG46E (FUG GUARD)

077SBSUM21T (SUMP GUARD)

077SBTRA21T (TRANSMISSION GUARD)

077SBTRF21T (TRANSFER CASE GUARD)

SUITS PETROL & DIESEL MODELS





Outback steel bull bar

070SB13N46Z - SUITS 2006-2011 PETROL & DIESEL MODELS



1



2



3



4



5

1 - 3 | Signature alloy bull bar

070AP15L46Z SUITS 2008-2011 PETROL & DIESEL MODELS

4 | Tradesman alloy bull bar

070AP15F46Z SUITS 2006-2008 PETROL & DIESEL MODELS

5 | Underbody guards

077SAFUG46Z (FUG GUARD)

077SATRA46Z (TRANSMISSION GUARD)

SUITS 2006-2011 PETROL & DIESEL MODELS



RB6 rear bar

0815B27221S - SUITS 2006-2011 PETROL & DIESEL MODELS



1

1 - 3 | Tourline alloy high loop grille guard

075AP16T46Z SUITS 2006-2011 PETROL & DIESEL MODELS

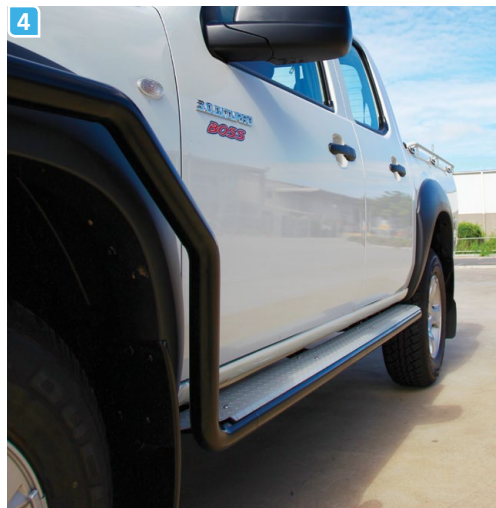
4 | 3/4 side bars & steps

780SB45S46Z SUITS 2006-2011 PETROL & DIESEL MODELS

5 | Tradesman steel bull bar

070SB15F46Z SUITS 2006-2008 PETROL & DIESEL MODELS

070SB15X46Z SUITS 2008-2011 PETROL & DIESEL MODELS



4



2



3



5

TJM Airtec snorkels

Snorkels are commonly the first accessory ever fitted to a four wheel drive. They assist with water crossings and provide hassle free air induction when immersed in dust. Air is cooler and cleaner at roof level than air travelling via the bonnet, which means greater fuel efficiency and less clogging of air filters. These are important factors, particularly when 4WDing on dry, dusty roads.

TJM Airtec snorkels are manufactured at the highest level. All products are made with leading Australian polymer materials that exceed the Australian Standard for UV stabilisation of UV8, with ratings at UV20-UV24. The colour pigmentation process doesn't cut any corners either, giving you an even, dense and bleed-free product.

Unlike other manufacturers, TJM individually engineer and design the snorkel to suit the natural shape of the vehicle. Although functionality is important, we want you to look good too!

Proudly Australian made and quality assured, you can have the confidence that a TJM Airtec snorkel will achieve peak performance each and every time.

How a TJM Airtec snorkel disperses rain water



Air Ram 011AR14B97T shown

**It is important that the complete Airtec unit is positively sealed to ensure no water ingress at any point.*

- › Rain water drops entering the air ram of a TJM Airtec snorkel is captured at the back of the inside curved surface, pooled around the base of the air ram and dispersing through the drain holes.
- › In the off chance that any minute rain water droplets find their way into the snorkel body, they will be atomized at the air filter.
- › Finally, the last line of defence is the original water drain in the vehicle's air cleaner assembly.*



**011SAT0146E (2011+) ▲
011SAT0146Z (2006-2011) ▼**



**TJM Airtec Wedgetail snorkel
011SATW0146E (2011+)**





TJM XGS Series 4000 suspension

Whether you're tackling corrugated roads, rough terrain, or you need to tow a caravan across the country, a TJM XGS Series 4000 suspension kit will improve every aspect of driving from road handling, braking ability, cushioning the ride from bumps and ruts, noise and vibration whilst also protecting the vehicle and its contents from wear and tear.



TJM air compressors

TJM has a range of vehicle mounted and portable compressors to suit your needs, whether that be for inflating tyres or operating TJM Pro Lockers.



TJM Torq winches

TJM's range of new generation Torq winches now have even more power for increased line speed and fast recovery. Stringently tested and utilising the highest standards in engineering design and manufacturing, you can count on a TJM winch when you're in trouble. For those who enjoy a challenge, owning a TJM winch provides you with the freedom to visit more places. When you're off the beaten track, stuck and lacking traction, it's not always as simple as relying on a mate with traction to bail you out. Using a TJM winch is a much better way to successfully retrieve your vehicle.



TJM recovery equipment

Every situation is unique, and the right equipment and a well thought out plan are the key ingredients to successful vehicle recoveries. Designed by engineers and manufactured to the highest standards, TJM recovery equipment gets you out of trouble.

Should you become bogged, stuck or immobile, TJM recovery gear becomes your backup plan to ensure you can continue your journey.



TJM dual battery systems

TJM's range of international award-winning battery management systems will help you avoid the inconvenience and possible dangers of running your battery down.

AEROKLAS canopies for Mazda BT-50

Aeroklas are on the cutting edge of canopy manufacturing and development being the first company in the world to offer Engineered ABS Double Shell Canopies.

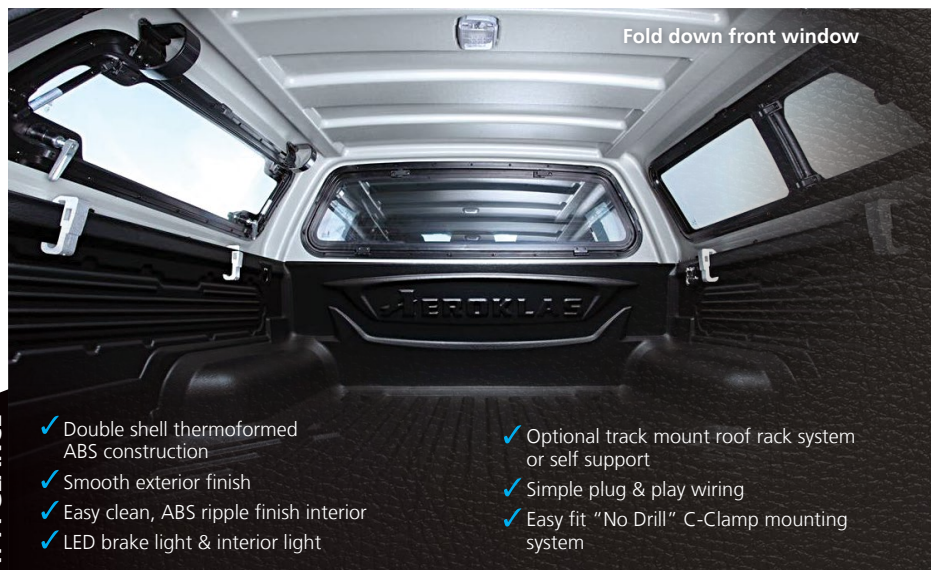
Both the inner and outer shells are moulded together to bring you twice the strength and durability than a single skinned canopy, featuring a higher impact resistance and ability to reshape after impact.

Available in dual and space cab, the Aeroklas canopy is painted using OE quality paint giving it such a perfect, glossy and flawless finish.



TJM CANOPY

**PERFORMANCE YOU CAN RELY ON:
BUILT STRONG, BUILT TO LAST.**



OUR CANOPIES AT A GLANCE

- ✓ Double shell thermoformed ABS construction
- ✓ Smooth exterior finish
- ✓ Easy clean, ABS ripple finish interior
- ✓ LED brake light & interior light

- ✓ Optional track mount roof rack system or self support
- ✓ Simple plug & play wiring
- ✓ Easy fit "No Drill" C-Clamp mounting system

- ✓ Single shell 5mm fibreglass construction
- ✓ Smooth exterior finish
- ✓ Multiple side window configurations
- ✓ Sliding front window
- ✓ Optional self support roof rack
- ✓ 100kg rated load capacity
- ✓ LED brake light & interior light



Strength is the foundation

Heavy duty 5mm fibreglass construction.



Solid integrated base-rail

Central to every canopy is the unique fully integrated base rail assembly. This provides a water tight, extremely strong mounting architecture for enduring performance.



LED dome light

- › LED interior light with rear door switch



C-Clamp system

- › Easy to fix and requires no drilling into the vehicle body



Track mount roof bars

- › Allows the fitment of roof racks with a loading capacity of up to 80kg



Handle lock & keys

- › Large size, strong and easy to hold
- › Key alike to windows



Window options

- › Lift up side windows available



LED brake light

- › Built in and fixed to rear window to provide safety while driving



MAZDA BT-50 2012+

AEROKLAS



We've set the standard AS 1235; 2000

All dual cab canopies have successfully achieved a rated load capacity of 100kg.



Robust roof rack mounts

A dual layer of 4.5mm fibre reinforced composite greatly increases the thickness and strength.



Window options

Adaptable window options: No windows (fibreglass sides), fixed, sliding or lift-up side windows options.




Smooth exterior

A smooth, high gloss, durable finish in gel coat white, coupled with optimum UV protection ensures a maintenance free exterior.



MAZDA BT-50 2012+



We started it

Founded on mateship in 1973, TJM is the Aussie pioneer of 4WD equipment.

We're tried and proven

Australia's rugged, yet diverse landscape has provided the ideal testing ground. Whether your journey takes you on or off road, for work or play, TJM has the gear you can depend on.

We're tough, yet sophisticated

Using the latest engineering and manufacturing technology, our products are exposed to stringent testing and thorough quality assurance procedures to guarantee our customers receive nothing but the best.

Everybody wants a piece of us

Our research and development team brings leading-edge and performance-driven products. We're the experts not just on our home turf but also offshore, so it's not surprising TJM's Aussie innovations are exported around the globe.



4X4 EQUIPPED

TJM IS WHERE YOUR JOURNEY BEGINS WITH OVER 80 STORES AUSTRALIA WIDE, STOCKING THE LARGEST RANGE OF THE BEST BRANDS

ACT

Canberra (02) 6280 9468

NSW

SYDNEY METRO

Brookvale (02) 9905 4764
Carlton (02) 9547 3355
Chipping Norton (02) 9602 1502
Hornsby (02) 9477 5528
Parramatta (02) 9635 0811
Penrith (02) 4721 1355

REGIONAL

Albury (02) 6021 5544
Armidale (02) 6771 1781
Ballina (02) 6681 5300
Broken Hill (08) 8088 7086
Batemans Bay (02) 4472 4746
Cobar (02) 6836 4011
Coffs Harbour (02) 6652 4899
Dubbo (02) 6885 3777
Forbes (02) 6852 2411
Goulburn (02) 4822 4455
Grafton (02) 6642 4335
Griffith (02) 6962 1444
Inverell (02) 6721 1115
Lismore (02) 6621 7000
Macarthur (02) 4648 2085
Narooma (02) 4476 2576
Newcastle (02) 4951 1184
Orange (02) 6361 7999
Port Macquarie (02) 5525 1888

Tamworth (02) 6763 1500
Tweed Heads (07) 5524 8218
Wagga Wagga (02) 6925 4770
Wollongong (02) 4227 4888

NT

Alice Springs (08) 8952 2388
Darwin (08) 8995 8800

QLD

BRISBANE METRO

Brendale (07) 3490 6900
Caboolture (07) 5499 1400
Cleveland (07) 3286 9646
Coopers Plains (07) 3277 8255
Hendra (07) 3103 8484
Underwood (07) 3209 3448

REGIONAL

Bundaberg (07) 4152 0144
Cairns (07) 4047 8900
Gold Coast (07) 5596 3472
Goondiwindi (07) 4671 7300
Gympie (07) 5482 3900
Hervey Bay (07) 4124 1855
Mackay (07) 4841 8100
Maroochydore (07) 5451 1155
Maryborough (07) 4121 2288
Mt Isa (07) 4749 6100
Rockhampton (07) 4927 6844
Toowoomba (07) 4634 6096
Townsville (07) 4758 0995

SA

ADELAIDE METRO

Clovelly Park (08) 8276 4400
Nailsworth (08) 8344 6444

REGIONAL

Mount Gambier (08) 8723 3231
Murray Bridge (08) 8531 1550
Nuriootpa (08) 8562 2772
Port Lincoln (08) 8683 0209
Waikerie (08) 8541 2099

TAS

Burnie (03) 6431 3222
Hobart (03) 6231 5121
Launceston (03) 6344 9744

VIC

MELBOURNE METRO

Airport West (03) 9354 1116
Burwood (03) 9808 8966
Carrum Downs (03) 9017 5574
Dandenong (03) 9792 1116
Kilsyth (03) 9728 6300

REGIONAL

Bairnsdale (03) 5152 3431
Ballarat (03) 5331 2116
Bendigo (03) 5441 7225
Geelong (03) 5277 1444
Horsham (03) 5382 2675
Mansfield (03) 5779 1902

Mildura (03) 5023 4466
Pakenham (03) 5941 6588
Sale (03) 5143 0555
Seymour (03) 5792 2777
Shepparton (03) 5823 5285
Swan Hill (03) 5032 1448
Traralgon (03) 5176 6666
Warrnambool (03) 5561 8760

WA

PERTH METRO

Kewdale (08) 6454 2200
Mandurah (08) 9581 6184
O'Connor (08) 9331 2788

REGIONAL

Albany (08) 9841 2000
Broome (08) 9193 6006
Esperance (08) 9071 5407
Geraldton (08) 9964 8008
Karratha (08) 9144 4331

TJM Products Pty Ltd has made every effort for the information contained within this brochure to be correct at the time of printing (MAY 17). However TJM Products Pty Ltd reserve the right to alter any specifications and to alter the range of products stocked without notice. Always consult your local TJM distributor for the latest information on TJM Products and its specifications. DISCLAIMER: TJM bull bars do not include winch, aerial or driving lights. Some images are for illustration purposes only.

